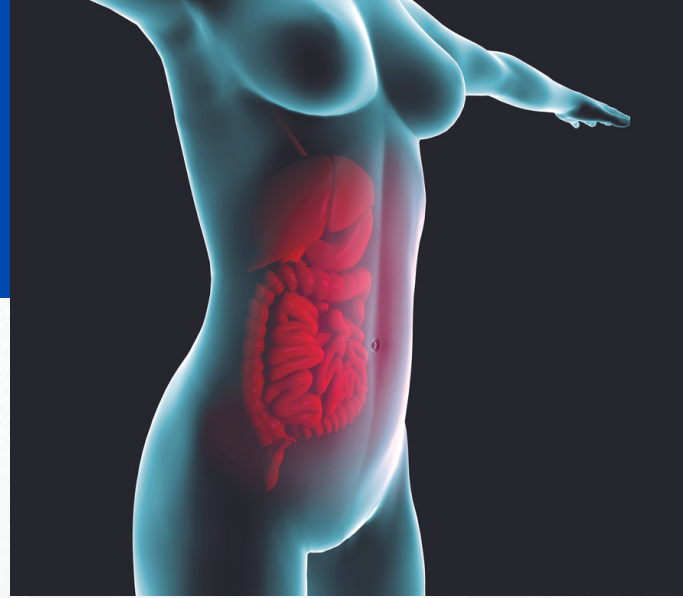


EXHIBITOR PACKAGES

Thomas Jefferson University

6th Annual Women and Gastroenterology Health
Symposium

February 23, 2024



All Exhibitor Packages Include:

- Listing in the exhibitor directory
- Acknowledgment on PowerPoint slideshow, in pre and post conference emails
- Company listing on conference signage
- Attendee list (post conference)
- Conference meals (breakfast, lunch and break snacks).

Bronze Level-\$3,500

- Assigned exhibit location
- 2 company representatives
- 1 complimentary conference registration
- 1 (6ft) draped table

Silver Level-\$6000

In-Person Exhibit Benefits

- 1 full page (8.5 x 11), color company advertisement in Exhibitor Directory
- Up to 3 company representatives
- 3 complimentary conference attendance for company representatives
- 1 (6ft) draped table

Virtual Exhibit Benefits

Virtual booth in the online course exhibit hall includes:

- Company name
- Contact Us button- this button will display the contact information (name, title, email and/or phone) for one company representative

Gold Level-\$8,000

In-Person Exhibit Benefits

- Choice of exhibit location in (first come, first serve basis)
- 2 full page (8.5 x 11), color company advertisement in Exhibitor Directory
- Virtual Networking Meeting with one Course Planners - post conference (no more than 3 company representatives)- (Maximum 30 minute meeting).
- Individual company acknowledgement signage
- 5 company representatives
- 4 complimentary conference registrations for company representatives (to claim CME Credit)
- Two 6ft draped tables

Virtual Exhibit Benefits

Virtual booth in the online course exhibit hall includes:

- Company Logo- JPG or PNG image
- Contact Us button- (name, title, email and/or phone) for one company representative
- About Us button- this button will either link to your company's website OR display a short company description in a modal
- Product Info button- this button will either link to a website OR a PDF of your choice
- Additional Resource button- this button will either link to a website OR a PDF of your choice

To register or for more information: <https://jefferson.cloud-cme.com/womenandgi2024>

EXHIBITOR INFORMATION

Thomas Jefferson University

6th Annual Women and Gastroenterology Health Symposium

February 23, 2023



Exhibit Hall Information

Location

Dorrance H. Hamilton Building
1001 Locust St. Philadelphia, PA 19107

The exhibit hall will remain open throughout the conference with dedicated exhibit times.

Exhibit Times

8:30AM-10:00AM- Registration, Continental Breakfast & Exhibits

11:55AM-12:45PM- Lunch & Exhibits

1:45PM-2:10PM- Break & Exhibits

Set-up & Breakdown

Set-Up: Friday, 2/23/24 beginning 7:30AM

Breakdown: Friday 2/23/24 by 5:00PM

All exhibit booth displays and materials must be removed from the exhibit hall at this time

[Click here to secure your exhibit booth](#)

Boost Your Brand with a Product Theater

Product theaters provide a focused, high-value live marketing opportunity for exhibitors to reach motivated professionals in a pre-scheduled, private session at the program. This opportunity is limited to (3) 30-minute sessions.

This is a live, in person opportunity where basic AV set up of a screen; projector and microphone will be provided. Any additional AV requirements will be at the expense of your company.

Due to space constraints, they will be capped at 50 attendees per session.

Available slots*:

Friday, February 23, 2024

Morning Product Theater-\$7,500

8:30AM- 9:00AM

or

9:15AM- 9:45AM

Afternoon Product Theater-\$10,000

12:05PM-12:35PM

**Slot selection is not guaranteed until your payment is received in full*