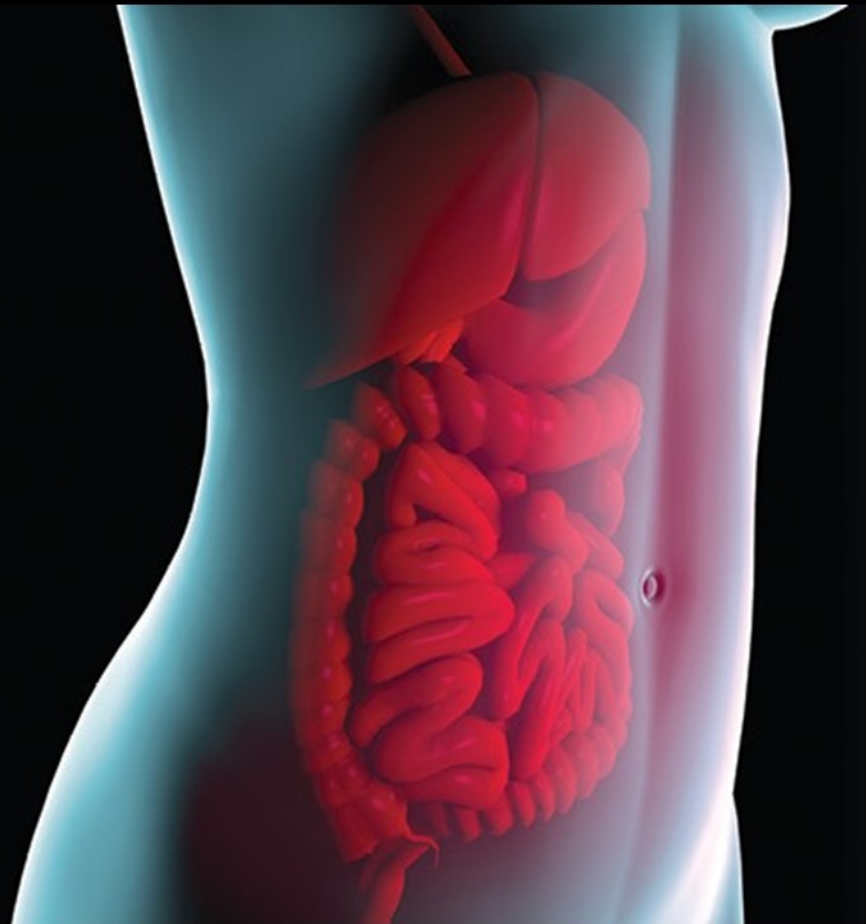


Exhibitor Prospectus



7th Annual Jefferson
Women and Gastroenterology Health Symposium

February 28, 2025

7th Annual Jefferson Women and Gastroenterology Health Symposium
Friday, February 28, 2025 | 8:30AM -5:00PM ET
Thomas Jefferson University Hamilton- Connelly Auditorium

Hybrid Meeting- Exhibit In-Person and Online

On behalf of the Thomas Jefferson University's Division of Gastroenterology and Hepatology and, course directors, Drs Cuckoo Choudhary, Dina Halegoua-DeMarzio, Stephanie Moleski, I cordially invite you to participate as an exhibitor at the upcoming **7th Annual Jefferson Women and Gastroenterology Health Symposium**. The conference will take place on **Friday, February 28, 2025** in the **Hamilton- Connelly Auditorium at Thomas Jefferson University in Center City, Philadelphia, Pennsylvania**.

This one-day course is designed to improve the care of female patients by presenting emerging scientific and clinical evidence related to medical conditions that occur more frequently in women or can present differently in women. This conference attracts nearly 200 healthcare professionals specializing in gastroenterology, hepatology, internal medicine, family medicine, general surgery, gynecology, and colorectal surgery. Attendees will participate in interactive case-based discussions and assess the practice gaps that exist in the care and treatment in both the male and female patient and be provided the tools to develop a comprehensive patient centric plan of care.

There are four levels of exhibiting opportunities: Platinum, Gold, Silver and Bronze with optional product theaters. The hybrid format presents the opportunity for exhibitors to also share product information with attendees who will join the conference virtually. Additional details and the benefits of each level can be found in the attached packet.

For information about the various benefits included in the exhibit opportunity, please review the information below. To register your company and for more information visit:

<https://jefferson.cloud-cme.com/WOMENGI2025>

Should you have any questions contact me directly at Mia.Varnado@jefferson.edu. We hope you will join us as an exhibitor for this exceptional program and important networking event! Please feel free to contact me if you need any additional information.

Thank you,

Mia Varnado

CPD Planner

Office of Continuing Professional Development
Thomas Jefferson University

**Please note that Sidney Kimmel Medical College/Thomas Jefferson University is not listed as a covered recipient on the CMS/Sunshine Act list. Contact us with any questions regarding status*

EXHIBITOR PACKAGES

Thomas Jefferson University
7th Annual Women and Gastroenterology Health
Symposium
February 28, 2025



All Exhibitor Packages Include:

- Listing in the exhibitor directory
- Acknowledgment on PowerPoint slideshow, in pre- and post- conference emails
- Company listing on conference signage
- Attendee list (post conference)
- Conference meals (breakfast, lunch and break snacks)

Bronze Level-\$4,000

In-Person Only

- Assigned exhibit location
- 2 company representatives
- 1 complimentary conference registration
- 1 (6ft) draped table

Silver Level-\$6,000

In-Person Exhibit Benefits

- 1 full page (8.5 x 11), color company advertisement in Exhibitor Directory
- Up to 3 company representatives
- 3 complimentary conference attendance for company representatives
- 1 (6ft) draped table

Virtual Exhibit Benefits

Virtual booth in the online course exhibit hall includes:

- Company name
- Contact Us button- this button will display the contact information (name, title, email and/or phone) for one company representative

Gold Level-\$8,000

In-Person Exhibit Benefits

- Choice of exhibit location (first come, first serve basis)
- 2 full page (8.5 x 11), color company advertisement in Exhibitor Directory
- Virtual Networking Meeting with one Course Planner - post conference (no more than 3 company representatives)- (Maximum 30 minute meeting)
- Individual company acknowledgement signage
- 5 company representatives
- 4 complimentary conference registrations for company representatives (to claim CE credit)
- 2 (6ft) draped tables

Virtual Exhibit Benefits

Virtual booth in the online course exhibit hall includes:

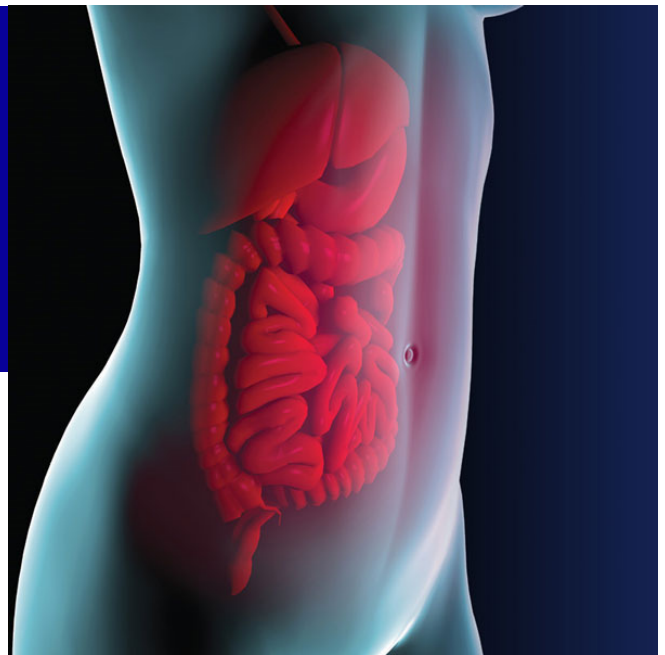
- Company Logo- JPG or PNG image
- Contact Us button- (name, title, email and/or phone) for one company representative
- About Us button- this button will either link to your company's website OR display a short company description in a modal
- Product Info button- this button will either link to a website OR a PDF of your choice
- Additional Resource button- this button will either link to a website OR a PDF of your choice

To register or for more information: <https://jefferson.cloud-cme.com/womengi2025>

EXHIBITOR INFORMATION

Thomas Jefferson University

7th Annual Jefferson Women & Gastroenterology
Health Symposium



Platinum Level—\$10,000

In-Person

- Listing in the exhibitor directory
- Acknowledgment on PowerPoint slideshow, in pre- and post- conference emails
- Company listing on conference signage Attendee list (post conference) Conference meals (breakfast, lunch and break snacks)
- Choice of exhibit location (first come, first serve basis)
- 3 full page (8.5 x 11), color company advertisement in Exhibitor Directory
- Virtual Networking Meeting with one Course Planner “ post conference (no more than 3 company representatives)- (Maximum 30 minute meeting)
- Individual company acknowledgement signage
- 5 company representatives w/ complimentary conference registrations for company representatives (to claim CE credit)
- 2 (6ft) draped tables

Virtual Exhibit Benefits Virtual booth in the online course exhibit hall includes:

- Company Logo- JPG or PNG image
 - Contact Us button- (name, title, email and/or phone) for one company representative
 - About Us button- this button will either link to your company’s website OR display a short company description in a modal
 - Product Info button- this button will either link to a website OR a PDF of your choice
 - Additional Resource button- this button will either link to a website OR a PDF of your choice
-

EXHIBITOR INFORMATION

Thomas Jefferson University

7th Annual Women and Gastroenterology Health Symposium

February 28, 2025



Exhibit Hall Information

Location

Dorrance H. Hamilton Building
1001 Locust Street | Philadelphia, PA 19107

The exhibit hall will remain open throughout the conference with dedicated exhibit times.

Exhibit Times

8:30AM-10:00AM Registration, Continental Breakfast & Exhibits

12:35PM-1:35PM Lunch & Exhibits

3:00PM-3:15PM- Break & Exhibits

Set-up & Breakdown

Set-Up: Friday, February 28, 2025 Beginning 8:30AM

Breakdown: Friday, February 28, 2024 by 5:00PM

All exhibit booth displays and materials must be removed by 5:00PM

**Product
Theater
Opportunities !!**

Boost Your Brand with a Product Theater

Product theaters provide a focused, high-value live marketing opportunity for exhibitors to reach motivated professionals in a pre-scheduled, private session at the program. This opportunity is limited to (3) 30-minute sessions.

This is a live, in person opportunity where basic AV set up of a screen; projector and microphone will be provided. Any additional AV requirements will be at the expense of your company.

Due to space constraints, each product theater will be capped at 50 attendees.

Available Slots:

Friday, February 28, 2025

Morning Product Theater-\$7,500

8:45AM- 9:15AM

or

9:20AM- 9:50AM

Afternoon Product Theater-\$10,000

12:35PM-1:35PM

**Slot selection is not guaranteed until your payment is received in full*

Exhibit Information
7th Annual Jefferson Women & Gastroenterology Health Symposium

Exhibit Location/ Times	<p>The exhibit area is available throughout the conference. The following times are preliminary dedicated exhibit times where food and beverage will be served:</p> <table style="width: 100%; border: none;"> <tr> <td style="width: 30%;">8:30am</td> <td>Set up</td> </tr> <tr> <td>8:45am- 9:15am</td> <td>Product Theater #1</td> </tr> <tr> <td>9:00am - 10:00am</td> <td>Registration & Exhibits</td> </tr> <tr> <td>9:20am - 9:50am</td> <td>Product Theater #2</td> </tr> <tr> <td>12:35am - 1:35am</td> <td>Lunch, Exhibits, Product Theater #3</td> </tr> <tr> <td>3:00pm - 3:15pm</td> <td>Break & Exhibits</td> </tr> </table>	8:30am	Set up	8:45am- 9:15am	Product Theater #1	9:00am - 10:00am	Registration & Exhibits	9:20am - 9:50am	Product Theater #2	12:35am - 1:35am	Lunch, Exhibits, Product Theater #3	3:00pm - 3:15pm	Break & Exhibits
8:30am	Set up												
8:45am- 9:15am	Product Theater #1												
9:00am - 10:00am	Registration & Exhibits												
9:20am - 9:50am	Product Theater #2												
12:35am - 1:35am	Lunch, Exhibits, Product Theater #3												
3:00pm - 3:15pm	Break & Exhibits												
Set-up /Breakdown	Exhibit set-up can begin on Friday, February 28, 2025 8:30AM (Subject to Change). Exhibit breakdown must be completed by 4:45PM on Friday, February 28, 2025.												
Electrical Needs	Electrical services are included in the exhibit fee. Each company is responsible for communicating their electrical in the registration form.												
Shipping Information	<p>Shipments will be accepted by the Jefferson Office of CPD 2 days prior to conference, no earlier than Wednesday, February 26, 2025. Be sure to label them accordingly. Please email Mia.Varnado@jefferson.edu with the following information: name of sender, how many boxes, when you are shipping them, and when they are expected to arrive at Alumni Hall.</p> <p style="text-align: center;">Label for Boxes: Thomas Jefferson University Alumni Hall 1020 Locust Street, Suite M-5 Philadelphia, PA 19017 Attn: Office of CPD- Mia Varnado 7th Annual Women & Gastroenterology Health Symposium Package ____ of ____</p> <p>Thomas Jefferson University does not accept any liability for equipment, goods, displays, or other materials which arrive unmarked or fail to arrive at the conference location. Each exhibiting company is responsible for insuring its property for loss or damage. Please note that all company representatives are solely responsible for coordinating return shipping at the conclusion of the conference with Union League representatives.</p>												
Payment	<p>Payment can be made with American Express, Visa and MasterCard are via the course page http://jefferson.cloud-cme.com/WomenGI2025</p> <p>After registering via the course page you may also make payment via check. Please make check payable to: Thomas Jefferson University Note Course ID 39445</p> <p>Mail to: Thomas Jefferson University; Office of CPD 1020 Locust Street, Suite M-5 Philadelphia, PA 190177</p>												

Exhibit Information
7th Annual Jefferson Women & Gastroenterology Health Symposium

Questions	Contact Mia.Varnado@jefferson.edu
Exhibitor Rules	<p>Exhibitors acknowledge that:</p> <ul style="list-style-type: none"> • Exhibitor is not furnishing commercial support for this conference, exhibitor is buying exhibit space. • All exhibits must be tabletop or portable in nature. • Exhibitor activities are restricted to the allocated space at the conference. Distribution of educational/promotional materials by exhibitors is limited to their booth space in the exhibit area. It is not permitted anywhere else in the hall, in conference meeting space, or at the entrances to the conference meeting space. • Exhibits are intended for informational purposes, products should not be sold on site. • Photography by exhibitors that includes pictures of the overall conference and/or its attendees is prohibited. • The purpose of the exhibit is to further the education of meeting attendees through product and service displays and demonstrations. Exhibitor personnel may observe, but must refrain from any participation or recording of any scientific sessions on that company’s behalf. <p>The conference is not responsible for the security of exhibitors’ materials. We suggest that exhibitors leave nothing of value (e.g., laptop computer, audio visual equipment, etc.) unattended at any time in the exhibit hall.</p>
Sunshine Act	<p>The Parties acknowledge and agree that Exhibiting Company may be subject to Section 6002 of the Affordable Care Act, which added Section 1128G to the Social Security Act, and its implementing regulations codified in 42 CFR 402 & 403 (collectively the “Sunshine Act”).</p> <p>Exhibiting companies are solely responsible for collecting any information about actions within their exhibit space that constitutes a payment or transfer of value to a Covered Recipient that is required to be reported under the Sunshine Act.</p>
Exhibitor Refund Policy	<p>Requests for exhibitor fee refunds must be submitted in writing and received by the Office of CPD before January 28, 2025. There will be no refunds after this period. Cancellations notified before the one month period will incur a 10% cancelation fee. Exhibitors who fail to attend the conference are responsible for the entire fee. All refunds will be processed after the conference.</p> <p style="text-align: center;">Submit refund requests to: Office of CPD Thomas Jefferson University Jefferson Alumni Hall 1020 Locust Street, Suite M-5 Philadelphia, PA 19107</p> <p>Or by email to jeffersoncpd@jefferson.edu - please include the activity name in the subject line.</p>

7th Annual Jefferson Women and Gastroenterology Health Symposium
Friday, February 28, 2025 | 9:00AM - 4:30PM EST
(Preliminary Agenda/Subject to Change)

CE ACCREDITED PROGRAM

9:00AM – 10:00AM	9:00AM – 10:00AM Registration, Continental Breakfast & Exhibits	
10:00AM – 10:15AM	Opening Remarks:	Cuckoo Choudhary, MD
Session I: Liver, Pancreas, and more Moderator: Dina Halegoua, MD		
10:15AM – 10:35AM	Alcoholic Liver Disease in Women ***	Divya Ayyala, MD
10:35AM – 10:55AM	Cardiac Problems in Women with Autoimmune GI Diseases: What’s the Connection? ***	Rachel Redfield, MD
10:55AM - 11:15AM	SIBO: is the incidence on rise or are we quicker to diagnose? **	Ana Shnitser, MD
11:15AM – 11:35AM	Gall Bladder diseases in Pregnancy and beyond ***	Yasi Xiao, MD
11:35AM – 12:35PM	Keynote: Anita Afzali MD, MPH, MHCM, FACC, AGAF Trailblazing a Path: My Journey from Refugee to Leader in Healthcare Innovation, Clinical Excellence, and GI Global Advocacy	
12:35PM – 1:35PM	Lunch & Exhibits	
Session II: The lumen, IBD, and more Moderator: Stephanie Moleski, MD		
1:35PM – 1:55PM	Update in Barrett’s Esophagus in Women ***	Allana Persaud, MD
1:55PM – 2:20PM	My Stomach Hurts? Non-Ulcer Dyspepsia ***	Chris Henry, MD
2:20PM – 2:40PM	Obesity in IBD patients***	Priya Seghal, MD
2:40PM-3:00PM	Questions &Answers/Panel Discussion	
3:00PM – 3:15PM	Break &Exhibits	
Afternoon Breakout Sessions <i>Bridging Career Development Gaps Across Diverse Roles in Gastroenterology</i>		
3:15PM – 3:45PM	Residents/Students: Mapping Your GI Career Path: Navigating Subspecialties and Future Opportunities	Katie Duffey, MD
	Nurse Practitioners/Nurses: Navigating Complex GI Cases: Collaborative Approaches to Optimize Patient Outcomes	Melanie DiNapoli, BSN, RN
	Community-based Physicians: <i>Advanced Endoscopy and Therapies in the Community Setting: What’s New and Practical</i>	Christine Herdman, MD Melissa Vitilo, MD
	Faculty: <i>The Academic Balancing Act: Excelling in Teaching, Research, and Clinical Care</i>	Dina Halegoua-DeMarzio
	Dietitians: <i>The Dietitian’s Role in Managing Complex GI Conditions: A Collaborative Model</i>	Emily Rubin, RD
3:45PM-4:00PM	Question &Answers (in the breakout rooms)	
4:00PM- 4:15PM	Key Points from Breakout Sessions	Cuckoo Choudhary, MD Dina Halegoua-DeMarzio, MD Stephanie Moleski,MD
4:15 PM-4:30 PM	Closing remarks	Cuckoo Choudhary, MD

***sessions qualify for both PA Patient Safety Credits and Nursing Pharmacotherapy Credit
**session qualifies for Nursing Pharmacology Credit ONLY
*sessions qualify for PA Patient Safety Credits

