



OCPD

RSS Coordinators Training

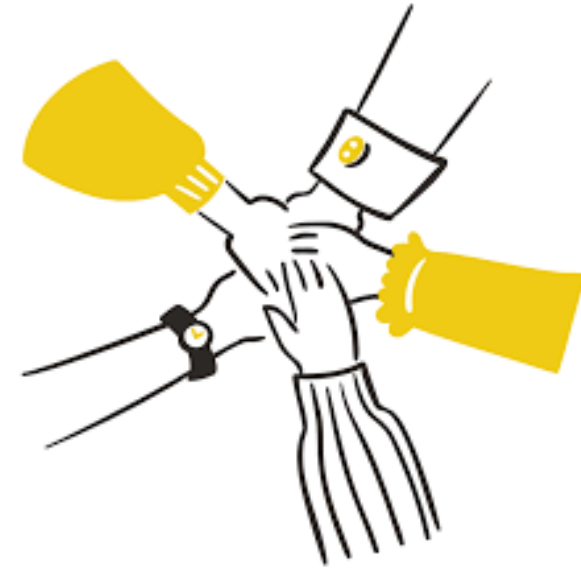
Dr. Annette Mallory Donawa
Associate Provost, OCPD

Jennifer Turner, CA
Education Program Specialist, OCPD

September 26, 2024

Engagement

- Turn on cameras
- Actively participate ask questions



Agenda

- Welcome and Ice Breaker
- Bimonthly training dates
- Annual Evaluation Fiscal Year 23-24 deadline
- Annual Accreditation billing cycle and accreditation fees
 - Forward the new charge code number **by August 30th**
- Professional Development

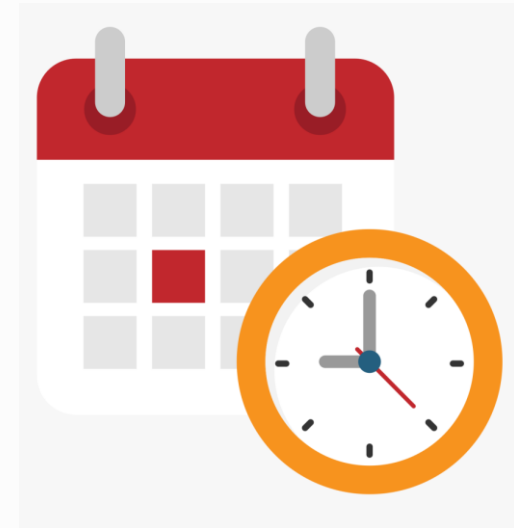
Icebreaker Question

What superpower would you like to have and why?

OCPD RSS Bi-monthly Meetings Schedule AY23-24 | 12:00-1:00 pm

Date

1. ~~September 20th~~
2. ~~November 15th~~
3. ~~January 17th~~
4. ~~March 15th~~
5. ~~May 8th~~
6. ~~June 5th~~
7. ~~August 21st~~ | Evaluation
8. ~~September 26th~~
9. ~~December 11th~~



Regularly Scheduled Series (RSS) Annual Evaluation

- Mid-August 2024 through CloudCME
 - **August 19th through October 15th, 2024**
- Survey is assigned to each RSS
 - My CE
 - Select Evaluations and Certificates
 - Notifications are sent to the learner every Monday via CloudCME until October 15th
- The same questions apply to all regularly scheduled series
- **Please share survey results from your department for OCPD re-accreditation**

RSS Billing Cycle

- **RSS Billing Overview**

- RSS billing typically occurs in the Fall of the current fiscal year October through November

- **Process**

- OCPD Educ. Program Specialist will reach out to RSS Coordinators for the charge codes
 - An Account Number/Natural code is needed for processing.
 - If no account number/natural code is given, the default account number that the IDT department will use is 7109
- After the OCPD RSS Coordinator receives the charge codes for all RSSs, the report is sent to the OCPD Operations Manager to process
- The Operations Manager prepares the IDT and sends it to the IDT department for processing
- For external Jefferson groups, an invoice will be sent to the RSS coordinator for payment by check or credit card

Academic Year 24-25 Annual Accredited CE Fee Structure

- CME fee is based on the affiliation and frequency



Directly Affiliated	Non-Affiliated
\$2,150 Weekly/Biweekly	\$3,400 Weekly/Biweekly
\$1,490 Monthly/Quarterly	\$2,250 Monthly/Quarterly

ACCME Definitions

Live Activities – The same content is offered multiple times for different audiences. Although it may happen weekly, monthly, or quarterly, it is not considered a series as the audience varies with each meeting.

Regularly Scheduled Series (RSS) – A live activity planned as a series with multiple sessions, offered weekly, monthly or quarterly. Primarily planned by the accredited organization’s staff and generally targets the same audience over the whole series. Examples include grand rounds and tumor boards. **Source:**

<https://www.accme.org/faq/how-regularly-scheduled-series-defined>

Professional Development Opportunities



- **MAACME** *Mid-Atlantic Alliance for Continuing Medical Education*
<https://maacme.clubexpress.com/>
 - MAACME's membership fee is only \$35.00
 - Benefits
 - Book Club
 - Chats
 - Webinars
 - Annual conferences for the CME team registration discounts
 - Network with other healthcare education professionals
- **2024 MAACME Annual Conference – November 12-13, 2024**

